

Trellis Flowers Block

6 1/2" finished

A pretty little block with lots of potential, the trellis emerges as the blocks are joined together. A yardage chart is given for a lap size quilt as well as instructions for block assembly.

Be sure to read the tips on page three for additional ideas for this block.

Pieces To Make One Block



1 – 3 1/2" center square



4 – 3 1/2" x 2" rectangles



4 – 2" squares

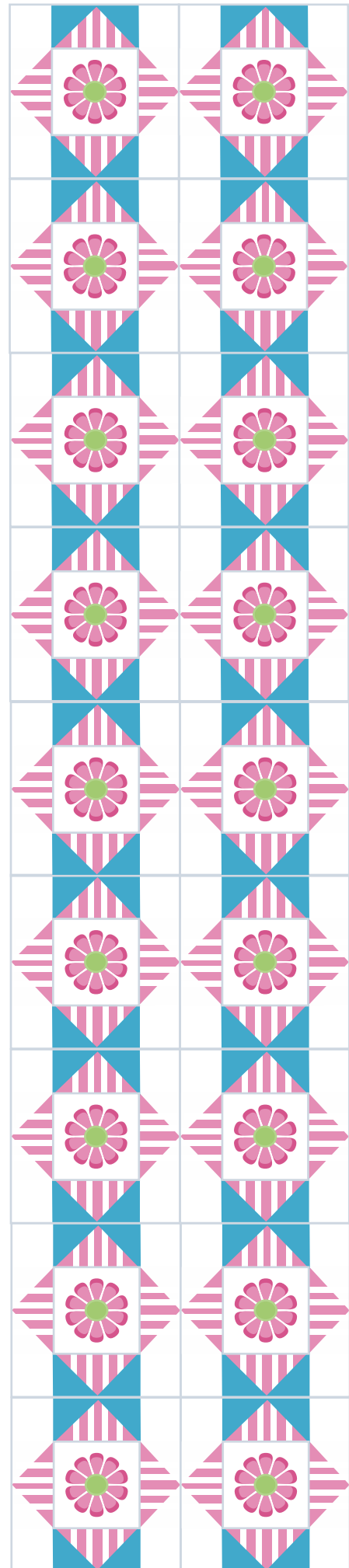


8 – 2" squares

(4 for flying geese and 4 for corner squares)

Skills Required:

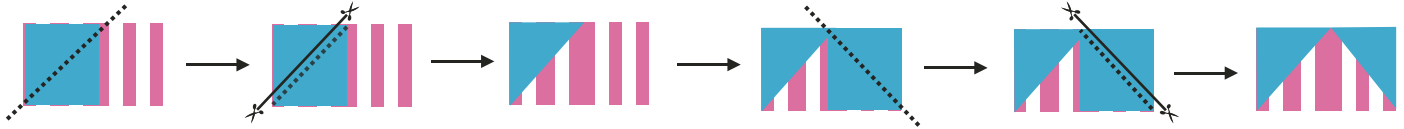
Flying Geese (instructions provided)



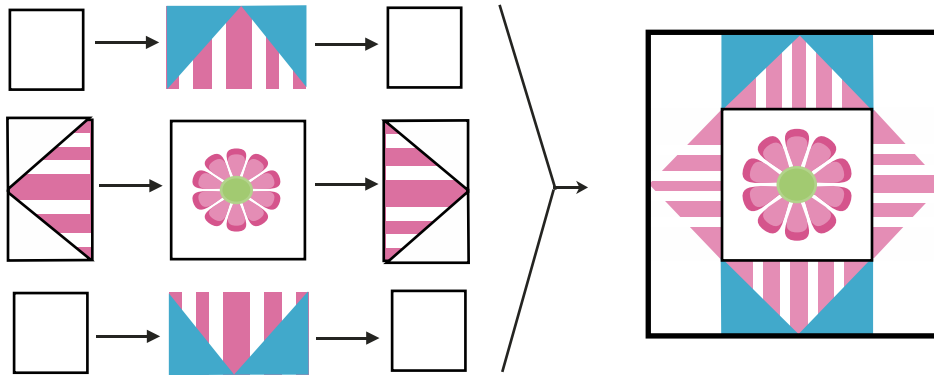
Block Assembly

Assemble the flying geese units by sewing one of the 2" squares to one of the rectangles. Place the pieces right sides together and mark a diagonal line across the square as shown in the diagram. Sew along this line.

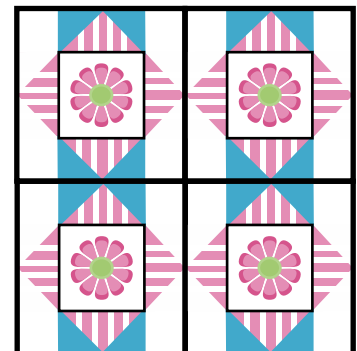
Cut off the excess leaving a 1/4" seam allowance. Be sure to cut off the portion extending to the corner edge. Fold open. Press. Repeat for other side of rectangle using another of the 2" squares. Make four units—two with white and two with solid/print.



Sew each row together as shown in diagram. Sew rows together to finish block.



To create a 12 1/2" block, sew four blocks together being careful to align the solid/print portions of the flying geese units as shown below.

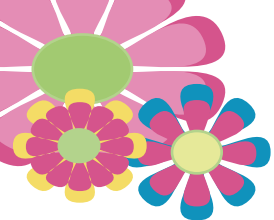


52" x 64" Lap Quilt

20 – 12" blocks (4 blocks x 5 blocks with narrow border)

Yardage Requirements

Fabric	Yardage	Pieces	Cut Size
Main Print / Center Squares	7/8 yd.	80	3 1/2" squares
Stripe	1 2/3 yds.	320	3 1/2" x 2" rectangles
Solid/print	7/8 yd.	320	2" squares
White	1 3/4 yd.	640	2" squares
Border	1/2 yd.	6	2 1/2" WOF strips
Backing	3 1/4 yd.		Cut in half lengthwise, selvages removed and pieces sewn together along long edges
Binding - Double Fold	1/3 yd.	6	1 3/4" WOF strips



52" x 64" Lap Quilt

20 – 12" blocks

(4 blocks x 5 blocks with narrow border)

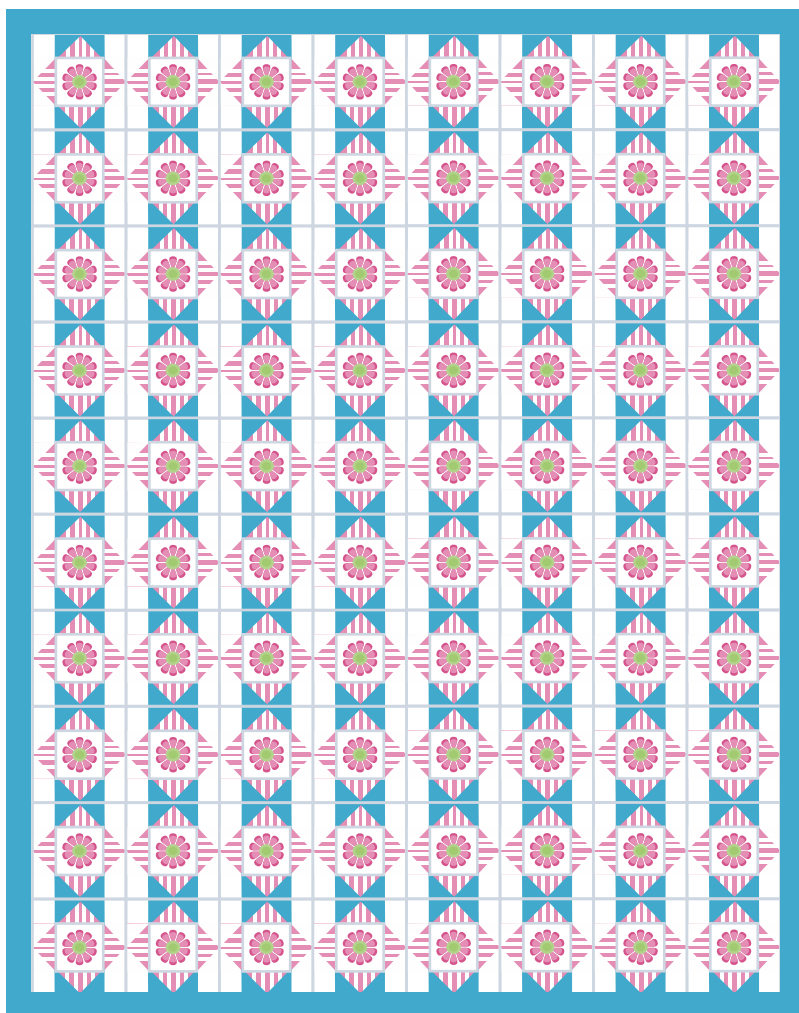
Sew four 12 1/2" blocks together to make a row.
Make five rows. Sew rows together.

Add border strips to sides. Add border strips to top
and bottom.

Cut backing into two equal pieces. Remove
selvedges along one side. Sew right sides together
with cut edges aligned. Press.

Layer quilt top, batting and backing. Baste. Quilt as
desired.

Sew binding strips together end to end. Fold wrong
sides together with raw edges aligned. Press. Attach
to all edges of quilted top. Turn to back. Stitch in
place.



Design Tips:



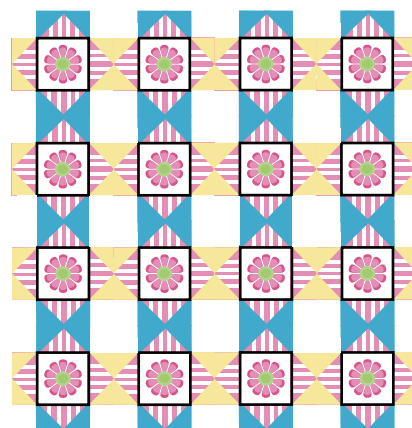
Select a secondary solid or small print for half of the flying geese (as shown by the yellow in the diagram). This will
create an effect similar to plaid in the background of your piece. Substitute the following yardages for the amount
shown for white.

White – 7/8 yds. 2nd solid/print – 7/8 yds.

Fussy cut your favorite personality prints for the center squares.
Allow plenty of extra yardage.

Make it scrappy using various prints in a single color family instead
of one solid/print for the flying geese squares.

Whatever you do, have fun!



Visit my website for more free
patterns and ideas.

100billionstars.com

